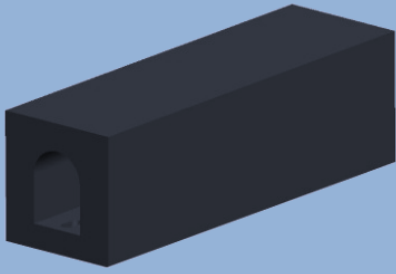


JIER

JFO SQUARE FENDERS





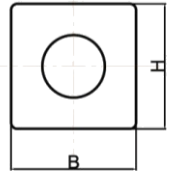
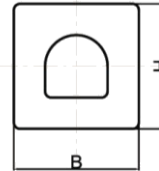
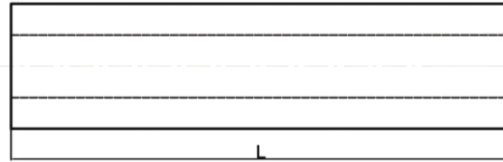
JFO Square Fenders

Square Rubber Fenders offer similar advantages to D fenders and are typically used where a stiffer fender is required. The square profile gives these fenders heavier shoulders which make them ideal for tougher service environments.

Square fenders are commonly used as beltings and also on the bow or stern of smaller tugs as pushing fenders since they can be fitted closely together to reduce the risk of ropes or protrusions catching between adjacent sections.

Core Attributes

- ◆ Ideal for tougher service environments
- ◆ Easy to be mounted quay by means of anchor belts
- ◆ Can be supplied in long lengths and be cut to length, angle cut at the ends



JFO Square Fender Dimensions Table

Item	JFO 150HB	JFO 200HB	JFO 250HB	JFO 300HB	JFO 350HB	JFO 400HB	JFO 500HB	JFO 600HB
H	150	200	250	300	350	400	500	600
B	150	200	250	300	350	400	500	600
ΦD	75	100	125	150	175	200	250	300
Φ1	60	65	75	80	85	95	105	115
Φ2	27	30	33	36	40	45	50	55
Bolt Size	M22	M26	M30	M32	M36	M38	M45	M52
Bolt Space	260~330	260~330	250~320	275~330	275~350	300~370	300~400	300~450

JFO Square Fender Performance Table

Model	Rated Deflection 40%	
	Reaction force (KN)	Energy absorption (KN·M)
JFO150HB	117	3.83
JFO200HB	156	6.85
JFO250HB	195	10.6
JFO300HB	234	15.4
JFO350HB	273	20.9
JFO400HB	312	27.4
JFO500HB	390	42.8
JFO600HB	468	61.6

